



COOPERATIVE CENTER FOR STUDY ABROAD

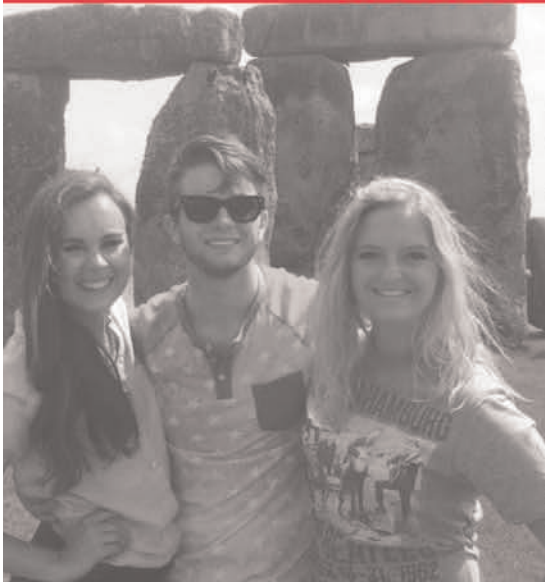


CCSA SUMMER 2015

BELIZE

IRELAND

LONDON



CCSA MEMBER INSTITUTIONS:

Austin Peay State University

Bellarmino University

The Citadel

Eastern Kentucky University

Georgetown College

Indiana State University

Kentucky State University

Middle Tennessee State Univ.

Mississippi State University

Morehead State University

Murray State University

Northern Kentucky University

Saint Francis University

Thomas More College

University of Kentucky

University of Louisville

Univ. of Tennessee at Chattanooga

Walsh University

Western Kentucky University

Western Oregon University

WHO WE ARE

THE COOPERATIVE CENTER FOR STUDY ABROAD, (CCSA) is a consortium of American colleges and universities, which jointly offers study abroad programs and internships in English-speaking regions. Currently, CCSA has 20 member institutions in Indiana, Kentucky, Mississippi, Ohio, Oregon, Pennsylvania, South Carolina and Tennessee.

CCSA, a not-for-profit organization headquartered at Western Kentucky University, annually develops, plans and coordinates study abroad programs in English-speaking areas of the world. In addition, 9 1/2-week internships are available in Dublin, Ireland. Special non-credit programs, such as choir tours and alumni trips, are planned in English-speaking regions as requested.

Participants can receive higher education credit (undergraduate or graduate) for successfully completing the CCSA program in which they are enrolled. Classes are taught by faculty from consortium member schools.

WHO CAN GO

While most CCSA participants come from CCSA member institutions, all undergraduate and graduate students in good academic and disciplinary standing are eligible to participate for academic credit in any CCSA program. Students at CCSA member institutions generally register for courses through their home institutions. Participants from institutions outside the consortium register as visiting students at Western Kentucky University, CCSA's host institution.

FOR MORE INFORMATION, PLEASE CONTACT CCSA AT:

Cooperative Center for Study Abroad

Tate Page Hall 104

Western Kentucky University

1906 College Heights Blvd

Bowling Green KY 42101

Phone: (270) 745-4512 or

(800) 319-6015

Fax: (270) 745-4499

Email: ccsa@ccsa.cc

FOLLOW US ON:



FACEBOOK

Follow CCSA @

<https://www.facebook.com/CCSA.cc>



TWITTER

Follow - CCSAcc



INSTAGRAM

Follow - CCSAcc



SUMMER PROGRAMS

PRIORITY APPLICATION DEADLINE: FEBRUARY 13, 2015

APPLICATION DEADLINE: FEBRUARY 27, 2015

BELIZE ANTHROPOLOGY

June 2 – July 1, 2015

BELIZE GEOGRAPHY

May 14 – 30, 2015

IRELAND EARLY

May 17 – June 1, 2015

IRELAND LATE

July 6 – July 21, 2015

LONDON SUMMER

July 10 – August 9, 2015



TABLE OF CONTENTS:

2 BELIZE ANTHROPOLOGY

3 BELIZE GEOGRAPHY

4 IRELAND EARLY

5 IRELAND LATE

6 LONDON SUMMER

10 DUBLIN INTERNSHIP

10 GENERAL PROGRAM INFORMATION

12 CAMPUS REPRESENTATIVES

CCSA 2015 COURSES by PROGRAM & DISCIPLINE

DISCIPLINE (COURSE LEVEL)	COURSE TITLE
Belize Anthropology (Jun 2 - Jul 1)	
Anthropology (UD/G)	Ethnographic Field School in Belize
Belize Geography (May 14 - May 30)	
Geosciences (LD/UD)	From Mayan Ruins to Caribbean Reefs: the Geography of Middle America
Ireland Early (May 17 - Jun 1)	
English/Interdisciplinary (UD)	Living at a Little Distance from the Body: Medicine & the Body in Irish Literature
Gender Studies/Communication (UD/G)	Gender in Irish Film
Kinesiology/Health (UD)	Meditation & Mindfulness on the Emerald Island
Nursing/Public Health/Social Work (UD/G)	Examine & Compare Health Care Systems in Transition: Ireland & the United States
Public Relations (LD/UD)	Irish Perspectives on Public Relations Case Problems
Ireland Late (Jul 6 - Jul 21)	
Business (UD/G)	Opening the Door for Change & Improvement in Ireland
English/Literature (LD/UD)	The Irish Side of Downton Abbey
History (UD/G)	The Struggle for Ireland's Identity
Nursing/Public Health (LD/UD)	Irish Health Care System: A Comparison with the U.S.
London Summer (Jul 10 - Aug 9)	
Art (UD/G) Group B	Photography in Britain
Art (UD) Group A	Experimental Publication Studio London
Art/Painting (LD/UD) Group B	Watercolor Painting In The Digital Age
Chemistry (UD) Group B	The Chemistry of Murder
Criminology/Criminal Justice/Political Science (UD/G) Group B	Law & Order: London
Economics (LD/UD) Group A	Empire, Innovation & War: Shaping the Economic Policy Debate Centuries
English/Literature (LD) Group A	The British Ghost Story Tradition
English/Literature (UD) Group B	The Appeal of Harry Potter
English/Literature (LD/UD) Group A	Myth, Legend & Horror in English Literature
English/History/Interdisciplinary (UD) Group B	Keep Calm & Carry On: Life in Great Britain During World War II
Healthcare/Interdisciplinary (UD/G) Group A	Exploring the World's Approach & Response to Aging: Healthy Living
International Business/Management (LD/UD) Group A	Through the Looking Glass: A View of Global Business in Action
Interior Design (UD/G) Group A	English Architecture, Interiors & Decorative Arts: A Historical Overview
Journalism/Communication/Integrated Strategic Communications (UD) Group B	World Media Systems
Leadership Science (UD) Group B	Power, Politics & Paradigms: Advanced Leadership Systems
Legal Studies/Public Administration/Criminal Justice (UD/G) Group A	Crime & Punishment: Murder Mayhem & Dungeons
Psychology/Interdisciplinary (UD) Group A	Our Concept of Mind & How British Psychology Shaped It
Theatre/English/Interdisciplinary (UD) Group B	Shakespeare in Performance

SUMMER: MAY 28 – AUGUST 2, 2015

APPLICATION DEADLINE: MARCH 27, 2015

DUBLIN INTERNSHIP

FALL: SEPTEMBER 3 – NOVEMBER 8, 2015

APPLICATION DEADLINE: JULY 10, 2015

WINTER PROGRAMS

Each year during winter break, CCSA offers a number of short, intensive study abroad programs to a variety of sites in English-speaking countries across the globe.

All programs depart December 26 and return approximately two weeks later. While each program offers a unique set of courses and experiences particular to the sites visited, all involve focused course activities, field trips and cultural enrichment activities which, when combined with the production of final course-related projects submitted after return stateside, enable participants to earn up to 3 semester hours of credit.

Visit our website
www.CCSA.cc
 for more information!





BELIZE ANTHROPOLOGY

JUNE 2 - JULY 1, 2015

PROGRAM BASE PRICE: \$4,309

INCLUDES INTERNATIONAL AIRFARE



PROGRAM OVERVIEW

Belize: an English-speaking country in the heart of Central America, home to one of the greatest concentrations of biodiversity on the planet, dotted with magnificent archaeological remnants of the Mayan people and populated by their descendants. But diversity in Belize doesn't end with its biological wonders, as you will discover for yourself by living among the people of Orange Walk on the CCSA Belize Anthropology Program.

The price of this CCSA program includes:

- roundtrip air transportation from one of CCSA's designated US departure cities
- ground transportation, including roundtrip airport transfer, between program sites in Belize
- accommodations in twin rooms, with occasional use of multi-bedded rooms
- most program excursions, course-related activities and entrances
- daily breakfast and dinner
- health and emergency evacuation insurance

Please see pages 10 and 11 for General Program Information—including application deadlines and payment schedule.

ANTHROPOLOGY

Ethnographic Field School in Belize

Douglas Hume, Ph.D. [humed1@nku.edu] Northern Kentucky University

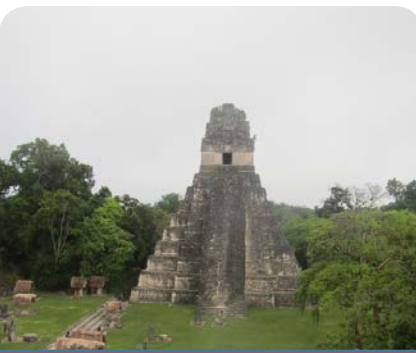
This course immerses students in Belizean culture and trains them in contemporary anthropological field methods. While in Belize, students will be primarily engaged in guided applied ethnographic fieldwork. Students will learn about the local culture by doing participant-observation and conducting ethnographic interviews in a community-based research project. Students will learn research ethics, unobtrusive observation, participant observation, field note writing and coding, ethnographic and life history interviewing, ethnolinguistic data collection, community mapping, rapid assessment procedures, qualitative data analysis and other ethnographic methods in addition to basic ethnographic writing.

Prerequisite: one semester of Anthropology

3 cr. hrs., UD/G

Visit our website
www.CCSA.cc
to learn more!





BELIZE GEOGRAPHY

MAY 14 - 30, 2015

PROGRAM BASE PRICE: \$4,479

INCLUDES INTERNATIONAL AIRFARE



PROGRAM OVERVIEW

Belize: an English-speaking country in the heart of Central America, home to one of the greatest concentrations of biodiversity on the planet, dotted with magnificent archaeological remnants of the Mayan people and populated by their descendants. Join us as we explore the physical/historical geography and cultural landscapes of Belize through visits to cays, islands, reefs, mountains, rainforests and ruins. A special feature of this program is the opportunity to snorkel at a World Heritage site.

The price of this CCSA program includes:

- roundtrip air transportation from one of CCSA's designated US departure cities
- ground transportation, including roundtrip airport transfer, between program sites in Belize
- accommodations in multi-bedded rooms
- most program excursions, course-related activities and entrances
- all meals
- health and emergency evacuation insurance

Please see pages 10 and 11 for General Program Information—including application deadlines and payment schedule.

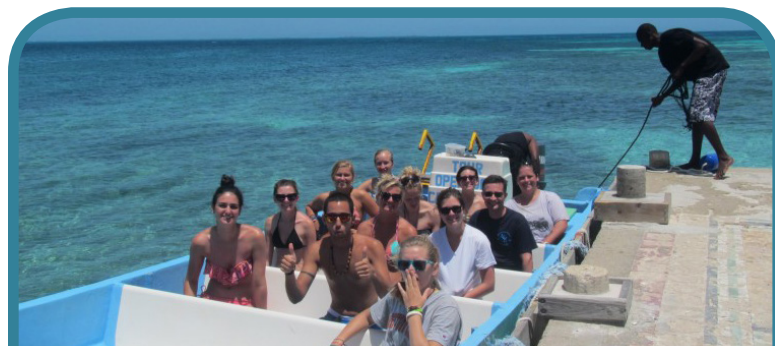
GEOSCIENCES

From Mayan Ruins to Caribbean Reefs: the Geography of Middle America

Dr. Christine Mathenge [mathengec@apsu.edu] Austin Peay State University

Nothing compares to mastering geography while on location. This course uniquely combines elements of physical features, economic linkages and intriguing cultural geography of Middle America while traveling in Belize. Students learn about spatial distributions of landforms including coral-based islands, the coastal plain, the striking Maya mountains and the interlocking network of rivers and creeks including the Belize River. The physical geography component of the course also includes a range of fascinating vegetation types like mangrove swamps, rainforests and pine savannas. Tentative field trips include snorkeling excursions on South Water Caye, tours of majestic ruins of highland Maya at Blue Creek, visits to Dangriga—one of Garinagu cultural capitals complete with private drumming lessons. There's a chance to see cacao farming and chocolate making, citrus farming and hot sauce production, banana farming and export operations as well as observe other Belizean economic connections with the global market place. Additionally, journaling about ordinary Creole, Garifuna, Maya, Spanish and English cultural landscapes will sum up reflections on overall travels in Belize.

3 cr. hrs., LD/UD





IRELAND EARLY

MAY 17 - JUNE 1, 2015

PROGRAM BASE PRICE: \$2,949

INTERNATIONAL AIRFARE NOT INCLUDED



PROGRAM OVERVIEW

Join CCSA as the Ireland Early Program visits both Irelands—North and South. While based in Dublin, the capital of the Republic of Ireland, we'll uncover the cultural significance behind Glendalough, Trinity College and places made famous by such writers as James Joyce and Jonathan Swift. Then we'll head North, tracking the history of Ireland, ancient and modern, stopping at the magnificent coastal World Heritage Site, The Giant's Causeway, and visiting locations associated more recently with the Troubles in Belfast and Derry. Then it's off to the beauty of the mountains, valleys and islands of the West of Ireland where Gaelic and traditional music can sometimes still be heard. Discover the beauty and the tragedy, the history and the hope that define this land still struggling to be united.

The base price of this CCSA program includes:

- ground transportation between program sites
- accommodations in twin rooms, with occasional use of multi-bedded rooms
- most program excursions, course-related activities and entrances
- local transport pass in Dublin
- daily breakfast and some additional meals
- health and emergency evacuation insurance

A GROUP FLIGHT OPTION is available at additional cost and includes:

- roundtrip air transportation from one of CCSA's designated US departure cities
- roundtrip ground transportation between airport and accommodation sites in Ireland

Please see pages 10 and 11 for General Program Information—including estimated flight cost, application deadlines and payment schedule.

COURSE DESCRIPTION

ENGLISH/INTERDISCIPLINARY

Living at a Little Distance from the Body: Medicine & the Body in Irish Literature

Mrs. Jessica Hume, MFA [jhume@bellarmine.edu] Bellarmine University

Our fascination with the body has often found its way into literature, particularly Irish literature: think of Bram Stoker's *Dracula*, James Joyce's explorations of the body and sexuality, and other tales of famine, grave-robbing, spirituality, politics and sex, all of which are evident in depictions of the body in Irish literature. This course will allow and encourage students in the health sciences and in literature to make interdisciplinary connections between the development of medicine & the body in Ireland and Irish literature, and to examine the cultures that fostered those connections. Students will potentially visit Kilmainham Gaol, the James Joyce Museum, a famine ship, Giant's Causeway, the Aran Islands, and other relevant sites.

Prerequisite: students must have successfully completed their university's lower division writing/English requirements

3 cr. hrs., UD



Visit our website
www.CCSA.cc
and apply, today!

GENDER STUDIES/COMMUNICATION

Gender in Irish Film

Dr. Emily Ryalls [eryalls@comm.msstate.edu] Mississippi State University

This course explores cultural and political discourses of gender and its intersections with sexuality, ethnicity, class and religion. Specifically, we will investigate gender representation in films about Ireland. Thus, we start from the premise that popular culture is an important site of popular expression, social instruction and cultural conflict, deserving of critical attention. This study abroad course will focus on films that reflect popular ideas about what constitutes appropriate expressions of femininity and masculinity and what it means to be Irish. Activities include visits to landmarks featured in films, Kilmainham Gaol (a prison turned museum) and the Abbey Theater.

3 cr. hrs., UD/G

KINESIOLOGY/HEALTH

Meditation & Mindfulness on the Emerald Island

Dr. Jean Kiernan [jean_kiernan@georgetowncollege.edu] Georgetown College

This course is an introduction to meditation and mindfulness applied to our modern lives. Through direct experiences, assigned readings and group discussions, students can learn how to use meditation and mindfulness as a solution to daily problems. The centers that we will visit will represent the Irish culture and heritage and make use of the Irish landscape to aid in the process of meditation. In this way students come to experience a sense of peace and happiness in their lives.

3 cr. hrs., UD

NURSING/PUBLIC HEALTH/SOCIAL WORK

Examine & Compare Health Care Systems in Transition: Ireland & the United States

Dr. Lorraine Bormann [lorraine.bormann@wku.edu] Western Kentucky University

This travel class will focus on experiential learning as students explore Ireland's health care system, the educational preparation and roles of the Irish health care team members, the health concerns of Ireland's vulnerable populations and health indicators. Students will examine the influence of Irish history and cultural beliefs on health practices. Students will visit historical sites and health care institutions in Ireland and have the opportunity to interact with health care providers and consumers of health care.

3 cr. hrs., UD/G

PUBLIC RELATIONS

Irish Perspectives on Public Relations Case Problems

Dr. Skye Cooley [skyeccooley@gmail.com] Mississippi State University

Students will learn case practices in public relations in an Irish and international context. Students will hear lectures from PR professionals from a number of Irish based public relations agencies and the Public Relations Institute of Ireland and visit companies such as Jameson worldwide, Guinness and Kerrygold to learn of specific case studies for each firm.

3 cr. hrs., LD/UD



IRELAND LATE

JULY 6 - 21, 2015

PROGRAM BASE PRICE: \$2,789

INTERNATIONAL AIRFARE NOT INCLUDED



PROGRAM OVERVIEW

Ireland: its green hills, quaint villages, dramatic coast and vibrant capital call to people around the globe to visit and often to return home. Ireland's rich and complex history helps to explain both the love many people feel for the Emerald Isle and why more people of Irish descent live outside its shores than within. Join CCSA for two weeks in July to explore this land to which so many Americans can trace at least some of their ancestry. Starting in Dublin, we'll explore the city immortalized by James Joyce, visit the ancient monastery at Glendalough and hear the music that pours into the streets on Temple Bar. Then we'll take the southern route through picturesque fishing villages, across valleys dotted with cottages and flocks of sheep, experiencing such places as Waterford, Cork and Tralee. Finally, in the West of Ireland, burial place of ancient heroes and W. B. Yeats, we'll reach some of the last outposts of the Gaelic language which gave birth to the Celtic culture that still defines this modern nation.

The base price of this CCSA program includes:

- ground transportation between program sites
- accommodations in twin rooms, with occasional use of multi-bedded rooms
- most program excursions, course-related activities and entrances
- local transport pass in Dublin
- daily breakfast and some additional meals
- health and emergency evacuation insurance

A GROUP FLIGHT OPTION is available at additional cost and includes:

- roundtrip air transportation from one of CCSA's designated US departure cities
- roundtrip ground transportation between airport and accommodation sites in Ireland

Please see pages 10 and 11 for General Program Information—including estimated flight cost, application deadlines and payment schedule.

COURSE DESCRIPTION

BUSINESS

Opening the Door for Change & Improvement in Ireland

Edward Oestreicher Ph.D. [egpo1@msn.com] Thomas More College

Travel abroad and link international business to history, culture, geography and government, while learning change strategies and becoming "green belt" certified. See and experience how companies operate within the complex global economy. Topics include cultural influences on business practices, changes in a European market/company and how to improve efficiencies. Broaden your perspective of the global marketplace. From the vantage point of Dublin, Galway and points between, see business, commerce and consumers in action through visits to companies, historic landmarks and museums. Learn the role of international process improvement practices, international institutions and how this impacts the global economy.

Prerequisite: basic math skills

3 cr. hrs., UD/G

ENGLISH/LITERATURE

The Irish Side of Downton Abbey

Dr. Gill Hunter [gill.hunter@eku.edu] Eastern Kentucky University

If you understand the complicated feelings people have about Downton Abbey's Crawley family, you need to explore the Big Houses of Ireland. The Crawleys are lovable, but resented; honored, but feared. For almost 200 years in Ireland, the wealthiest of the English controlled land, and the Irish who worked the fields and lived under the landowners' control barely made a living. Those Big Houses remain, and exploring them, hearing their stories and understanding the relationships they established will tell you all you need to know about the fears and the fight of the Irish and England's complicated history in Ireland.

Prerequisite: freshman composition

3 cr. hrs., LD/UD

HISTORY

The Struggle for Ireland's Identity

Prof. Michael Hinckley [hinckley1@nku.edu] Northern Kentucky University

Ireland's journey to independence and prosperity was not an easy road. Travel to Ireland will expose students to the people, places, and events that are a part of the Irish experience over the last 200 years. They will meet Irish politicians, historians and citizens as we explore the Emerald Isle's modern history together through visits to Dublin, Waterford, Tralee and Galway. Students will deepen their understanding of Ireland through visits to ancient structures, modern museums and walking the streets that Peadar Kirby, Daniel O'Connell and Michael Collins once walked. This course may also be of interest to students of Political Science and International Studies.

3 cr. hrs., UD/G

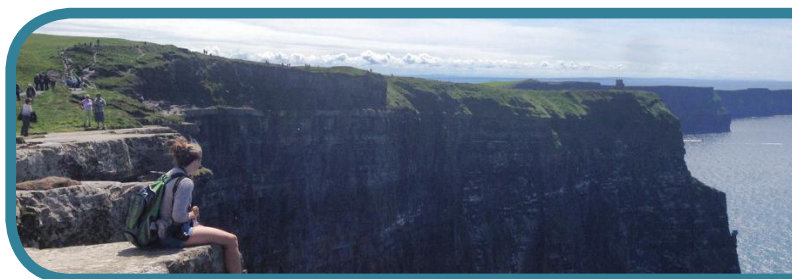
NURSING/PUBLIC HEALTH

Irish Healthcare

Prof. Adele Dean [adeana@nku.edu] Northern Kentucky University

While experiencing the rich culture and heritage, enticing sights, tastes and sounds of Ireland, witness a universal health care system at work and explore the differences between the Irish system and the emerging US system. Experience the mountains, valleys and coasts of Ireland while visiting healthcare facilities across the country. Speak with health care providers as well as clients of this national system, both in rural fishing villages as well as cities such as Dublin. While immersed in the Irish culture, learn about the unique health challenges of this country and the role nurses play in addressing them.

3 cr. hrs., LD/UD





LONDON SUMMER

JULY 10 - AUGUST 9, 2015

PROGRAM BASE PRICE: \$4,609

INTERNATIONAL AIRFARE NOT INCLUDED



PROGRAM OVERVIEW

London - one of the most exciting and cosmopolitan cities on earth, a wonderful background against which to study a wide array of subjects. CCSA's four-week program enables you to experience the great city while earning 3 or 6 hours of credit. You will reside in single en suite accommodation at the University of London King's College Great Dover Street Apartments, while studying with faculty and students from other CCSA member schools at Guy's Campus. Beyond the classroom and field trips, the schedule will enable you to explore the world outside of London on weekends.

Students may take a second 3 credit-hour course for an additional \$700. Your home university may have an additional fee, so check with your campus CCSA contact. The \$700 second course fee is non-refundable following the first payment deadline. Students considering taking the option to add a second class should bear in mind that doing so will require them to be in class or mandatory class-related activities all day Monday through Thursday.

The base price of this CCSA program includes:

- accommodations in single en suite rooms
- most course-related activities and entrances
- local transport pass
- pre-loaded meal card for Guy's Campus dining venues
- health and emergency evacuation insurance

A GROUP FLIGHT OPTION is available at additional cost and includes:

- roundtrip air transportation from one of CCSA's designated US departure cities
- roundtrip ground transportation between airport and accommodation sites in Ireland

Please see pages 10 and 11 for General Program Information—including estimated flight cost, application deadlines and payment schedule.

OPTIONAL TRIPS

CCSA offers two optional weekend excursions along with a day trip to Stonehenge and Salisbury. Information about these trips—including destinations, price, description of what is included and how to sign up— will be made available in the spring of 2015.

- STONEHENGE & SALISBURY: Friday, July 17
- WEEKEND EXCURSION #2: Friday, July 24 – Sunday, July 26
- WEEKEND EXCURSION #3: Friday, July 31 – Sunday, August 2

Orientations for each optional excursion will be held at 4:45 p.m. on the Wednesday before departure.

Before signing up for any of these trips, students should bear in mind that doing so will have an impact on time available for personal exploration. Students who elect to take two classes especially should give careful thought before signing up for more than one optional trip.

GENERAL PROGRAM SCHEDULE OF EVENTS

FRIDAY, JULY 10

Departure from U.S. (for students traveling with CCSA)

SATURDAY, JULY 11

Arrival and check-in at King's College Great Dover Street Apartments

Lunch at Guy's Campus

1:00 – 5:00 local area walking tours & time to explore

6:00 welcome reception [everyone is expected to attend!]

SUNDAY, JULY 12

8:30am - 10:00 orientation [mandatory]

Afternoon open for exploring area or to join optional free outings to be posted upon arrival.

5:00 – 7:00 faculty meeting [faculty only—mandatory]

MONDAY, JULY 13

Regular class meetings begin (please refer to Class Schedule, below, for specific details)

WEDNESDAY, AUGUST 5

4:45 pre-departure orientation [mandatory]

FRIDAY, AUGUST 7

Final Exams for all courses (please refer to Class Schedule for specific details)

SUNDAY, AUGUST 9

Depart for United States (students traveling with CCSA)

Students wishing to take two classes must select one Group A course and one Group B course, as designated in the Course Descriptions section. To avoid schedule conflicts, courses meet according to the following weekly pattern.

Group A classes:

- Monday mornings 9:00 - 12:00
- Wednesday afternoons 1:30 - 4:30
- Mandatory full day class field trips: July 14, 23, 28 and Aug. 6
- Friday, August 7, final exams/evaluations: 1:30 - 4:30

Group B classes:

- Monday afternoons 1:30 - 4:30
- Wednesday mornings 9:00 - 12:00
- Mandatory full-day class field trips: July 16, 21, 30 and Aug. 4
- Friday, August 7, final exams/evaluations: 9:00 - 12:00



COURSE SELECTION

Students wishing to take two classes must take one Group A and one Group B class.

ART

Experimental Publication Studio London

Prof. Aggie Toppins [augusta-toppins@utc.edu] University of Tennessee @ Chattanooga

The world's oldest and rarest books; the edgiest and most experimental magazines; a vast array of small press publishing houses, niche bookstores, galleries and museums—London offers all to the hungry publication designer. Using the city as the site for critical exploration, this course will examine reading, publication design and the history and future of the book. You will gain firsthand experience with a culture steeped in typographic heritage. You will see, read and touch books that would be otherwise unavailable. You will research and design a collaborative publication, which will be professionally printed in the UK—a handsome addition to your portfolio.

Prerequisite: Typography 1 and Visual Literacy (or Graphic Design 1)

3 cr. hrs., UD (Group A)

Photography in Britain

Prof. Laura Hartford [lhartford@bellarmine.edu] Bellarmine University

Explore London through the camera's lens. Learn about the technology and aesthetics of photography while creating stunning images in a nation where photography was born and where artists have been making photographs for nearly two centuries. Hands-on demonstrations of historic photographic processes and visits to iconic photography landmarks bolster class discussions focusing on historic and contemporary British photographers. Students will build a portfolio of photographs from their travels in and out of class and will learn to share these through blogging and book design. We'll also visit some of London's most spectacular photography collections and contemporary art galleries.

3 cr. hrs., UD/G (Group B)

ART/PAINTING

Watercolor Painting in the Digital Age

Suta Lee [lees@apsu.edu] Austin Peay State University

Sketch fabulous London using a digital camera together with the centuries-old watercolor painting medium. You will, by following the footsteps of the artist Joseph Turner, one of the founders of the school of English watercolor painting, create an artist journal that documents your daily experience in London. Our class will focus on watercolor techniques, on-site sketching methods, color theory, compositional design, history of watercolors, plus a bonus lesson on how to take better digital photographs and incorporate Photoshop for your painting reference. We will visit the British Museum, National Gallery, Tate Gallery, the Victoria and Albert Museum and several other historical sites. A self-published book (via online publishing) and a multimedia slide show will be the fruit of your travels.

Prerequisite: basic Drawing class or approval of the instructor

3 cr. hrs., LD/UD (Group B)

CHEMISTRY

The Chemistry of Murder

Dr. Judy Ratliff [jratliff@murraystate.edu] Murray State University

Students will discuss the chemistry involved in murders and the methods used in the poisoning of famous people in London and visit sites relevant to the death(s). Sites visited will include but not be limited to The British Museum in London, the Jack the Ripper Walk, London's Natural History Museum, The National Gallery in London, if possible a Shakespearian Play featuring the use of a poison, The Huntarian Museum and The Old Operating Theatre.

Prerequisite: previous background in chemistry or related science

3 cr. hrs., UD (Group B)

CRIMINOLOGY/CRIMINAL JUSTICE/POLITICAL SCIENCE

Law & Order: London

Professor Lisa Decker [lisa.decker@indstate.edu] Indiana State University

A Jack the Ripper tour, Scotland Yard, Big Ben, The Royal Courts of Justice, Magna Carta, Old Bailey, the 1066 Battle of Hastings Battlefield and many other exciting events and locations in London and beyond will be the key to our hands-on learning about the relationship between the English and American policing and courts. Join us as we explore the roots of the English and American criminal justice systems and compare current English and American police and court practices. A perfect class for students interested in law enforcement or courts and legal studies.

3 cr. hrs., UD/G (Group B)

ECONOMICS

Empire, Innovation & War: Shaping the Economic Policy Debate

Dr. Thomas A. Creahan [t.creahan@moreheadstate.edu] Morehead State University

What is the appropriate role of government in the economy? This contentious question dominates public discourse today, but Britain was the crucible for the debate, fertile ground for economic thinkers. What events inspired their ideas? And how did they influence subsequent events? We'll put ourselves in the position of these great minds (in some cases, literally), as we examine events that impacted the British economy over recent centuries—wars, recessions, the Industrial Revolution, the waxing and waning of the British Empire—and consider how their reactions, their ideas, influenced political and economic decisions and evolved into the economic science of the 21st century.

3 cr. hrs., LD/UD (Group A)





LONDON SUMMER

(COURSE DESCRIPTIONS CONTINUED FROM PREVIOUS PAGE)

ENGLISH/LITERATURE

The Appeal of Harry Potter

Dr. Ted Sherman [tedsherman@mac.com] Middle Tennessee State University

Why are the Harry Potter novels the best-selling books of all time? As we read and discuss the Harry Potter novels in London and visit film locations, we will attempt to answer this question by examining the symbolism, imagery and ideas employed in the novels. We will take a 6-mile walk of film sites in London, visit the Hogwarts Great Hall and Library in Oxford, traipse through Snape's Dungeon in Lacock and explore Alnwick Castle where Harry learned to fly. There's no greater place to read and study Harry Potter than England!

Prerequisite: students must have successfully completed their university's lower division writing/English requirements

3 cr. hrs., UD (Group B)

The British Ghost Story Tradition

Mr. Ryan E. Reed [ryan.reed@mtsu.edu] Middle Tennessee State University

No other country boasts a richer tradition of ghost stories than the United Kingdom, and there are few places where belief in the supernatural persists with such tenacity. In an attempt to understand why stories of the macabre and otherworldly remain so popular and relevant, we will read and discuss classic British ghost stories, see a performance of *The Woman in Black* and seek out lingering ghostly legends at Hampton Court, the Tower of London and Pluckley Village. Whether you are a skeptic or a true believer, come on; the ghosts of Britain await you!

Prerequisite: students must have successfully completed their university's freshman composition/writing requirements

3 cr. hrs., LD (Group A)

Myth, Legend & Horror in English Literature

Prof. Roy A. Helton [rhelton@murraystate.edu] & Dr. Staci Stone [sstone@murraystate.edu] Murray State University

King Arthur, Dracula, Jack the Ripper and Hobbits—who could ask for more from some of the most interesting writers in English? We'll venture into an incredible mixture of myth, legend, mystery, romance, horror and history. But we don't just read—we visit the places the books describe. We'll go to Glastonbury where King Arthur and his queen were said to be buried. We'll climb ancient tower steps at Warwick Castle where you can imagine a siege, tour of a real dungeon and watch demonstrations of medieval life. We'll walk the same streets of London, where Jack the Ripper stalked his victims, and spend a day in Oxford, the famous university city where Tolkien created Hobbits. How about lunch where Dracula's creator ate? You'll read Malory's *Le Morte d'Arthur*, Tolkien's *The Hobbit*, Stoker's *Dracula*, and Begg's *Jack the Ripper*. The pages of these books are just the starting place for a trip into fiction, reality and a few places in between.

Prerequisite: one semester of Composition or Basic Composition requirement at the student's school

3 cr. hrs., LD/UD (Group A)

ENGLISH/HISTORY/INTERDISCIPLINARY

Keep Calm & Carry On: Life in Great Britain During World War II

Amy Tudor [atudor@bellarmine.edu] & Renee Culver [rculver@bellarmine.edu] Bellarmine University

It's been nearly 70 years since World War II ended in Great Britain, but that period of history remains shrouded in myth. Come explore London, Dover and other towns re-shaped by war and see how civilians lived under the threat of bombs and invasion. We'll study the evacuation of nearly 2 million children from London and follow the path of city girls who formed a land army to keep farms running. And we'll explore how the British "keep calm" spirit helped to shape modern Britain. We'll also visit the Normandy beaches where Britain officially took the war to Germany. This course may also be of interest to students of Conflict and/or Peace Studies.

Prerequisite: one semester of freshman composition

3 cr. hrs., UD (Group B)

HEALTH CARE/INTERDISCIPLINARY

Exploring the World's Approach & Response to Aging: Healthy Living

Kathy K. Hager [khager@bellarmine.edu] Bellarmine University

Defining the world as our community, this course challenges the student to study the dynamics of aging. Great emphasis will be placed on developing healthy behaviors and defining financial security. A comparison approach will be used to determine how America, England and a student-selected third country approach all aspects of aging. Beyond theories, the student will experience how culture, politics, climate and geography affect health. The focus will be on opportunities to experience the people of England; the ultimate goal will be to appreciate the similarities of mankind and our ability to work together in improving quality of life. Experience all these with visits to sites such as St. Christopher's Hospice in London, Stonehenge and centers for healthy aging!

3 cr. hrs., UD/G (Group A)

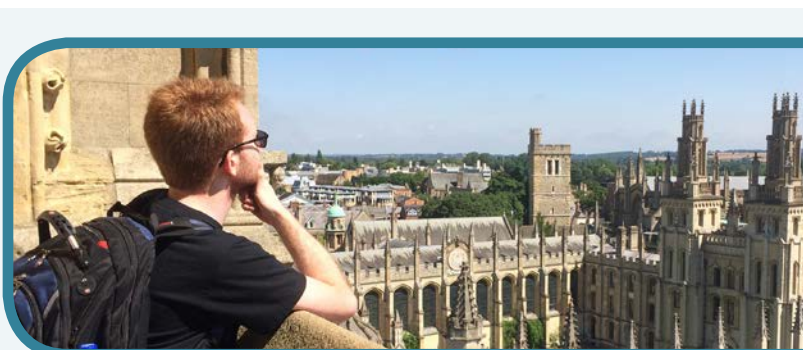
INTERNATIONAL BUSINESS/MANAGEMENT

Through the Looking Glass: A View of Global Business in Action

Lynnette Guzzino [lynnette.guzzino@thomasmore.edu] Thomas More College

Why are Starbucks, McDonalds, Unilever, Procter & Gamble and BMW successful multinational companies? Do firms standardize or localize their products and marketing message across borders? In this course, discover how culture, laws, innovation, technology and economics influence the product and production strategy of international firms. Through visits to sites such as Mini Cooper car plant and Unilever, learn how companies manage marketing, production and pricing in different countries. Understand how you, as a consumer, are a major stakeholder in the global economy. See commerce and consumers in action through visits to Harrods, Hard Rock Café, Tesco and H&M. Observe financial and political activities from visits to the London metal exchange and Parliament. Learn how organizations assist international companies through Penningtons Solicitors and US Commerce Department. From the vantage point of London, a business capital of the world, get a bird's eye view of how companies operate within the complex global economy.

3 cr. hrs., LD/UD (Group A)



INTERIOR DESIGN

English Architecture, Interiors & Decorative Arts: A Historical Overview

Dr. Dana Moody [Dana-Moody@utc.edu] University of Tennessee @ Chattanooga

Absorb centuries of history through English architecture, interiors and decorative arts. Take a glimpse into the everyday lives of past cultures by walking down England's streets, lingering within the interiors of its castles, manors and churches and studying its everyday objects. Touring London's museums and architectural landmarks make learning an easy task. This course will lend itself to individual interests and goals while focusing on architecture, interiors and decorative arts in England from the Medieval period through the Industrial Revolution.

3 cr. hrs., UD/G (Group A)

JOURNALISM/COMMUNICATION/INTEGRATED STRATEGIC COMMUNICATIONS

From the Tabloids to the BBC: Exploring British Media

Don Lowe, M.A. [dlowe2@uky.edu] University of Kentucky

Explore the colorful and diverse world of the British Media through field trips, site visits and discussions with journalists and media experts. See and hear firsthand how British journalists cover news and entertainment and how American journalists cover Europe for the U.S. Media. Analyze British electronic/print media and advertising/public relations agencies, including how they are regulated, how they function and who owns them. How far can and do the media go in their news coverage? What are the ethical and legal constraints? Is sensationalism the norm? What do the British think about their own media and about how they are depicted in U.S. media?

3 cr. hrs., UD (Group B)

LEADERSHIP SCIENCE

Power, Politics & Paradigms: Advanced Leadership Systems

Dr. Vikkie McCarthy [mccarthyv@apsu.edu] Austin Peay State University

London, the city of Buckingham Palace and Westminster Abbey, is the seat of power and leadership in the UK. These sites, which house the legitimate and expert power systems in London, are just two of many planned field trips for this class. A study of Advanced Leadership Systems would not be complete without a visit to the Tower of London, once home to such charismatic leaders as Guy Fawkes, Lady Jane Grey and Anne Boleyn. This course combines theory, research methodology and application to provide the student with a deeper understanding of the relationship between theory and practice in the realm of leadership. Included are topics such as transformational/charismatic leadership, contingent/situational leadership, and leadership styles. Other tentative field trips will include visits to Cambridge and the Oxford Leadership Academy as well as local London sites such as Scotland Yard and the Royal Observatory. Students will meet with local leaders and be encouraged to assess their own leadership style in order to develop a personal leadership action plan.

3 cr. hrs., UD (Group B)

LEGAL STUDIES/PUBLIC ADMINISTRATION/CRIMINAL JUSTICE

Crime & Punishment: Murder, Mayhem & Dungeons

LeAnn Beatty [leann_beatty@hotmail.com] & Professor Sucheta Mohanty [sucheta.mohanty@eku.edu] Eastern Kentucky University

Travel back in time to examine London's very public execution of justice. Together we will learn to critically analyze the effectiveness of the criminal justice legal system by taking an in-depth look at some of London's most famous criminals and prisons. Along the journey we will also examine the evolution of correctional treatment of prisoners including the history and abolition of the death penalty in England. You will experience firsthand the Tower of London, Old Bailey and the London Dungeon. These sights will be brought to life by examining real criminal cases such as Anne Boleyn and William Palmer, the Prince of Poisons. This course may also be of interest to students of Political Science or enrolled in a Paralegal Program.

3 cr. hrs., UD/G (Group A)

PSYCHOLOGY/INTERDISCIPLINARY

Our Concept of Mind & How British Psychology Shaped It

Dr. Thomas Wilson [twilson@bellarmine.edu] Bellarmine University

Interested in a class filled with tours across Great Britain, unique excursions that take you to major centers of learning and science across England and Scotland? Discover psychology from historical and geographic perspectives where it unfolded: in London and Oxford, Cambridge and Edinburgh. Like a Discovery or History Channel series on the story of how British mental philosophy became psychology, immerse yourself inside the show—filmed on location! Explore firsthand the beautiful places of fascinating history where famous thinkers from Locke to Freud contributed to our conception of the human mind. A great elective or systems course for psychology majors!

3 cr. hrs., UD (Group A)

THEATRE/ENGLISH/INTERDISCIPLINARY

Shakespeare in Performance

Carol Stewart [cjstewart@bellarmine.edu] Bellarmine University

It's sometimes easy to forget that Shakespeare was an actor as well as a playwright, unless you're an actor who has had the chance to live inside one of his characters. His plays stay with us not just because they are well-written pieces of dramatic literature: they stay with us because they are working playscripts waiting for performers, directors and designers to bring them to life. In this course, we'll see several productions of Shakespeare's plays at the Globe, at Stratford and elsewhere, and we'll practice different approaches to creative interpretation as a means of getting inside the plays.

3 cr. hrs., UD (Group B)



DUBLIN INTERNSHIP

SUMMER: MAY 28 - AUGUST 2, 2015

FALL: SEPTEMBER 3 - NOVEMBER 8, 2015

PROGRAM BASE PRICE: \$4,695

INTERNATIONAL AIRFARE NOT INCLUDED



PROGRAM OVERVIEW

Reap the benefits of a life-enhancing, career-advancing experience through CCSA's Dublin Internship Program! 9 ½ week placements are offered in Spring, Summer and Fall of each year. The internship, which is a supervised unpaid work placement, allows students to gain experience in business, industry, social or governmental agencies, theatres, museums or other work environments in a different work culture. Individuals possessing relevant practical experience are more likely to succeed in today's very competitive job market.

Academic credit for internships must be arranged at the student's home institution; therefore, the student must meet his/her school's requirements for internship credit.

Visit the Dublin Internship page of the CCSA website for more specific information regarding this unique opportunity.

Please see below and on page 11 for General Program Information—including application deadlines and payment schedule.



GENERAL PROGRAM INFORMATION

APPLICATION & ADMISSION

TO APPLY, visit our website at www.ccsa.cc, where applicants are guided through the process with step-by-step instructions. Applications are not considered for acceptance until receipt of the non-refundable application fee. Students from non-CCSA member institutions must also provide to the CCSA Central Office an official transcript and the Study Abroad Approval Form from their home institution, together with a faculty letter of recommendation, before their application can be acted upon.

All undergraduate and graduate students in good standing are eligible to participate in any CCSA program. Acceptance to the program for eligible applicants will be based upon date of submission, including the non-refundable application fee. For some courses of study, specific prerequisites may also have a bearing on acceptance. It is the student's responsibility to consult with his/her academic advisor prior to submission of his/her application to insure that the CCSA course is academically appropriate for the student's needs, e.g., major or graduation requirements.

COURSE INFORMATION

For more information regarding academic content of individual courses, visit our website or email faculty at the address listed below each course description. Before applying for any course, please make note of course prerequisites, which must be completed, or waived by the course instructor, prior to the program's departure date. By combining this intensive study abroad experience with directed study activities preceding and/or following the travel portion of the program, students may earn three semester hours of college credit. Up to six semester hours may be earned on the London Summer Program.

FINANCIAL AID

CCSA program courses are part of the regular course offerings of member universities; therefore, students may apply for any student loans or grants for which they would normally have eligibility. Students applying for financial aid are strongly encouraged to do so well before program application deadlines in order to facilitate the financial aid process and to make an informed and timely decision about participation.



REGISTRATION & TUITION

All participants under the age of 26 must be registered for academic credit to participate.

Students from CCSA member institutions generally register for courses through their home institution, with tuition and fees assessed in accordance with the policies of that institution. Students from CCSA member institutions should contact their institution's CCSA Campus Representative (see pages 12-13)

PROGRAM COSTS

Program	Program Base Price	Group Flight Options (estimate)*	Estimated Budget for Add'l Expenses**	Textbooks & Course Materials
Belize Anthropology	\$4,309	included	\$200 - \$300 for pre-departure vaccinations; \$300 - \$400 onsite	\$150
Belize Geography	\$4,479	included	\$200 - \$300 for pre-departure vaccinations; \$200 - \$250 onsite	\$150
Ireland Early	\$2,949	\$1,000 - \$1,200	\$325/week	\$150
Ireland Late	\$2,789	\$1,400 - \$1,600	\$325/week	\$150
London Summer***	\$4,609	\$1,600 - \$1,800	\$375/week	\$200 - \$250 per course
Dublin Internship	\$4,695	n/a	\$150/week	n/a

* These estimates are based on recent fares. The final price will vary and will be finalized by March 20, 2015.

**Everyone's needs are different, but former students recommend having enough personal spending money as an important consideration.

***Fee to add optional second class: \$700 (London Summer ONLY)

PAYMENT SCHEDULE & DEADLINES

Program	Non-Refundable Application Fee (payable by credit card or ACH check*)	First Payment due March 16, 2015	Final Payment due April 13, 2015 (plus single supplement if applicable)
Belize Anthropology	Priority Application Deadline: February 13, 2015 Program Application Deadline: February 27, 2015 \$150 on/before February 13, 2015; \$250 after February 13, 2015	\$2,000	\$2,309
Belize Geography			\$2,479
Ireland Early			\$949 + group air cost if applicable
Ireland Late			\$ 789 + group air cost if applicable
London Summer			\$2,609 + group air cost if applicable
Dublin Summer Internship	\$250 due by March 27, 2015 Application Deadline	\$2,000 due April 10, 2015	\$2,695 due May 8, 2015
Dublin Fall Internship	\$250 due by July 10, 2015 Application Deadline	\$2,000 due June 24, 2015	\$2,695 due August 21, 2015

*Credit card payments may be made online (via the www.ccsa.cc "Payment Information" link) or by phone. CCSA assesses a 3% surcharge to all credit card transactions. This surcharge will be automatically added to each credit card payment. ACH check payments are also accepted by phone. Checks or money orders should be mailed to the CCSA Central Office.

CANCELLATION POLICY

An applicant can cancel his/her planned participation in a CCSA program by notifying the CCSA Central Office via email to data@ccsa.cc. The level of refund for cancelled program participation varies according to specific circumstances, as detailed below:

- Individuals who cancel before or on the application deadline will receive a full refund of any monies paid to CCSA, minus the non-refundable application fee.
- Individuals who cancel after the application deadline and before/on the first payment deadline will forfeit the non-refundable application fee and will also be responsible for any unrecoverable expenses incurred by CCSA on their behalf.
- Individuals who cancel after the first payment deadline and more than 45 days before departure will forfeit the non-refundable application fee plus 10% of the program price and will also be responsible for any unrecoverable expenses incurred by CCSA on their behalf.
- London Summer ONLY: Individuals who elect to take a second class then drop one class after the first payment deadline will forfeit the \$700 second class fee plus any unrecoverable course-related expenses that may have been paid at time of withdrawal.
- Individuals who cancel within 45 days of the program's scheduled departure will be charged an administrative cancellation fee of \$300, in addition to the loss of the non-refundable application fee, 10% of the program price, and any unrecoverable expenses incurred by CCSA on their behalf.
- Should CCSA cancel an applicant's requested program/course before departure and the applicant not elect to participate in an alternate course or program, a full refund, including the application fee, will be issued to the applicant.
- Should CCSA terminate a program in progress for health or safety reasons all program payments to CCSA less non-recoverable expenses will be refunded.
- Participants who withdraw from or who are involuntarily removed from a program already in progress shall remain responsible for the full cost of the program.

Note: The foregoing standards also apply to applicants whose participation is involuntarily canceled by CCSA due to the applicant's failure to remain in good standing or complete required preconditions for participation, such as holding a valid passport, completing visa requirements (where applicable) in a timely fashion, etc.

CAMPUS CONTACT INFORMATION



CCSA - COOPERATIVE CENTER FOR STUDY ABROAD

Tate Page Hall, Room 104
Western Kentucky University
1906 College Heights Blvd
Bowling Green, Kentucky 42101
Phone: (800) 319-6015 / (270) 745-4512
FAX: (270) 745-4499
e-mail: ccsa@ccsa.cc

Jerry Barnaby, Executive Director, e-mail: jerry@ccsa.cc

Robert Bedard, Business Accounts Coordinator, e-mail: finance@ccsa.cc

Robin Byerly, Program Coordinator, e-mail: robin@ccsa.cc

David Nelson, Database Coordinator, e-mail: data@ccsa.cc

Apply online
today!
www.CCSA.cc



AUSTIN PEAY STATE UNIVERSITY

Dr. Mickey Wadia (CCSA Campus Rep.)
Professor of English, Dept. of Languages & Literature
Harned Hall, Room 227
APSU P. O. Box 4487
Clarksville, Tennessee 37044
Phone: (931) 221-7448 FAX: (931) 221-7219
e-mail: wadiam@apsu.edu

Marissa Chandler, EdD (Int'l Education Office)
Director of International Education
Harned Hall 127
APSU P. O. Box 4485
Clarksville, Tennessee 37044
Phone: (931) 221-6851 FAX: (931) 221-6853
e-mail: chandlerm@apsu.edu

BELLARMINE UNIVERSITY

Prof. Gabriele W. Bosley (CCSA Campus Rep.)
Director, International Programs
Miles Hall Suite 149, 2001 Newburg Road
Louisville, Kentucky 40205
Phone: (502) 272-8476 FAX: (502) 272-8067
e-mail: gbosley@bellarmine.edu



THE CITADEL

LTC Robert Pickering (CCSA Campus Rep.)
Director of Multicultural Student Services & Int'l Studies
137 Thompson Hall
171 Moultrie Street
Charleston, South Carolina 29409
Phone: (843) 953.5096 FAX: (843) 953.7464
e-mail: robert.pickering@citadel.edu



Ashley Dudley (CCSA Campus Rep.)

Asst. Director of Multicultural Student Services & Int'l Studies
137 Thompson Hall
171 Moultrie Street
Charleston, South Carolina 29409
Phone: (843) 953.1821 FAX: (843) 953.7464
e-mail: ashley.dudley@citadel.edu



EASTERN KENTUCKY UNIVERSITY

William Holmes (CCSA Campus Rep.)
Director, Center for International Education
Whitlock Bldg, Room 455 CPO 69
521 Lancaster Ave.
Richmond, Kentucky 40475
Phone: (859) 622-1478 FAX: (859) 622-1552
e-mail: william.holmes@eku.edu

Jennifer White (CCSA Campus Rep.)

Study Abroad Coordinator, Center for International Education
Whitlock Bldg, Room 455 CPO 69
521 Lancaster Ave.
Richmond, Kentucky 40475
Phone: 859-622-1705
e-mail: jennifer.white@eku.edu

GEORGETOWN COLLEGE

Dr. Rick Kopp (CCSA Campus Rep.)

Professor, Department of Biology
Asher Science Center, Room 21
400 East College Street
Georgetown, Kentucky 40324
Phone: (502) 863-8088 FAX: (502) 868-7744
e-mail: rick_kopp@georgetowncollege.edu

Jason Snider (Int'l Education Office)

Director of International Studies and Enrollment
McCandless House, 400 East College Street
Georgetown, Kentucky 40324
Phone and Fax: (502) 863-8390
e-mail: jason_snider@georgetowncollege.edu



INDIANA STATE UNIVERSITY

Christine Strong (CCSA Campus Rep.)

Study Abroad Program Director
Center for Global Engagement
Rhoads Hall Mezzanine
401 Chestnut Street
Terre Haute, Indiana 47809
Phone: (812) 237-3427 FAX: (812) 237-3602
e-mail: christine.strong@indstate.edu

Chris McGrew, Ph.D. (Int'l Education Office)

Director, Center for Global Engagement
Rhoads Hall Mezzanine
401 Chestnut Street
Terre Haute, Indiana 47809
Phone: (812) 237-3427
e-mail: chris.mcgrew@indstate.edu

KENTUCKY STATE UNIVERSITY

Alexander C K Lai, Ph.D. (CCSA Campus Rep.)

Assistant Professor
College of Arts and Sciences
Division of Mathematics and Sciences
Carver Hall 208D
400 East Main Street
Frankfort, Kentucky 40601
Phone: (502) 597-6784
e-mail: alexander.lai@kysu.edu



MIDDLE TENNESSEE STATE UNIVERSITY

Mr. Scott Boyd (CCSA Campus Rep.)

Director of Theatre; Professor of Design/Technical Direction
Box 43, Boutwell Dramatic Arts Bldg 212
Murfreesboro, Tennessee 37132
Phone: (615) 898-5606 FAX: (615) 898-5826
e-mail: scott.boyd@mtsu.edu

Ms. Tiffany Bickers (Int'l Education Office)

Director, Education Abroad
Box 127, Peck Hall 207
Murfreesboro, Tennessee 37132
Phone: (615) 898-5179 FAX: (615) 494-7639
e-mail: mtabroad@mtsu.edu





MISSISSIPPI STATE UNIVERSITY

Jon Rezek (CCSA Campus Rep.)
Interim Executive Director and Interim Associate Vice President
Mississippi State University
The International Institute
150 Lloyd Ricks Watson Bldg
Mississippi State, Mississippi 39762
Phone: (662)325-1970
jon.rezek@msstate.edu

Ms. Annika Campbell (Int'l Education Office)
Coordinator, Office of Study Abroad
100 Montgomery Hall
P.O. Box 9742
Mississippi State, Mississippi 39762
Phone: 662-325-8251 FAX: 662-325-8583
e-mail: acampbell@international.msstate.edu



MOREHEAD STATE UNIVERSITY

Dr. Sam Faulkner (CCSA Campus Rep.)
Professor of Sociology, Social Work and Criminology
Rader Hall 304
Morehead, Kentucky 40351
Phone: (606) 783-9382 FAX: (606) 783-5070
e-mail: s.faulkner@moreheadstate.edu

Dr. Royal Berglee (CCSA Campus Rep.)
Professor of Geography & International Studies
Coordinator for Study Abroad Programs
Rader Hall 346
Morehead, Kentucky 40351
Phone: (606) 783-2454 FAX: (606)783-5096
e-mail: r.berglee@moreheadstate.edu



MURRAY STATE UNIVERSITY

Ms. Melanie McCallon Seib (CCSA Campus Rep.)
Director of Education Abroad
Institute for International Studies
Woods Hall 178
Murray, Kentucky 42071
Phone: (270) 809-2277 FAX: (270) 809-3237
e-mail: msu.studyabroad@murraystate.edu

Dr. Staci Stone (CCSA Campus Rep.)
Chair and Associate Professor
Department of English and Philosophy
7C Faculty Hall
Murray, Kentucky 42071
Phone: (270) 809-4717 FAX: (270) 809-4545
e-mail: ssstone@murraystate.edu



NORTHERN KENTUCKY UNIVERSITY

Dr. Francois Le Roy (CCSA Campus Rep.)
Executive Director, International Education Center
University Center 330
Highland Heights, Kentucky 41099
Phone: (859) 572-6908
e-mail: leroy@nku.edu

Dr. Jeffrey Williams (CCSA Campus Rep.)
Professor, Department of History and Geography
Landrum Academic Center 440
Highland Heights, Kentucky 41099
Phone: (859) 572-5834 FAX: (859) 572-6088
e-mail: williamsj@nku.edu



SAINT FRANCIS UNIVERSITY

Ms. Juliana Horvath (CCSA Campus Rep.)
Director, Office for Study Abroad
214 Schwab Hall, PO Box 600
Loretto, Pennsylvania 15940
Phone: (814) 472-3245 FAX: (814) 471-1113
e-mail: studyabroad@francis.edu



THOMAS MORE COLLEGE

Dr. Raymond G. Hebert (CCSA Campus Rep.)
Dean Emeritus, History Department
Crestview Hills, Kentucky 41017
Phone: (859) 344-3310 FAX: (859) 344-3342
e-mail: raymond.hebert@thomasmore.edu



UNIVERSITY OF KENTUCKY

Dr. Ruth Beattie (CCSA Campus Rep.)
Associate Dean, Undergraduate Studies/Professor, Biology Dept.
110 T.H. Morgan Building
Lexington, Kentucky 40506
Phone: (859) 257-7647 FAX: (859) 257-1717
e-mail: rebeat1@email.uky.edu

Dr. Anthony Ogden (CCSA Campus Rep.)
Executive Director, Education Abroad & Exchanges
International Center, 310 Bradley Hall
Lexington, Kentucky 40506
Phone: (859) 257-4067 FAX: (859) 257-1026
e-mail: a.ogden@email.uky.edu

Miko McFarland (Int'l Education Office)
Assistant Director, Education Abroad & Exchanges
International Center, Bradley Hall 305
545 Rose Street
Lexington, Kentucky 40506
Phone: (859)-323-2134
e-mail: miko.mcfarland@uky.edu



UNIVERSITY OF LOUISVILLE

Virginia Hosono (CCSA Campus Rep.)
Associate Director, Office of Study Abroad & Int'l Travel
International Center, 2301 S. Third Street
Louisville, Kentucky 40292
Phone: (502) 852-0374 FAX: (502) 852-7216
e-mail: edabroad@louisville.edu



UNIVERSITY OF TENNESSEE AT CHATTANOOGA

Mr. Hubert L. Prevost (CCSA Campus Rep.)
Director, Office of Int'l and National Student Exchange
326 University Center, Dept. 1751
615 McCallie Avenue
Chattanooga, Tennessee 37403
Phone: (423) 425-4735 FAX: (423) 425-4768
e-mail: hugh-prevost@utc.edu



WALSH UNIVERSITY

Dr. Mark C. Rogers (CCSA Campus Rep.)
Chair, Division of Humanities
250 CMHCC, 2020 East Maple Street
North Canton, Ohio 44720
Phone: (330) 490-7154 FAX: (330) 490-7165
e-mail: mrogers@walsh.edu



WESTERN KENTUCKY UNIVERSITY

Laurie Monarch (CCSA Campus Rep.)
Director of Study Abroad and Global Learning
Grise Hall 128
1906 College Heights Blvd #11064
Bowling Green, Kentucky 42101-1064
Phone: (270) 745-5334 FAX: (270) 745-2883
e-mail: aura.monarch@wku.edu

Dr. Susan Jones (CCSA Campus Rep.)
Study Abroad Advisor
Profesor of Nursing
AC Room 141, 1906 College Heights Boulevard
Bowling Green, Kentucky 42101
Phone: (270) 745-3213 FAX: (270) 745-3392
e-mail: susan.jones@wku.edu

Katherine Hale (Int'l Education Office)
Study Abroad Advisor
Grise Hall 128
1906 College Heights Blvd. #11064
Bowling Green, Kentucky 42101
Phone: (270) 745-2571 FAX: (270) 745-2883
e-mail: katherine.hale@wku.edu



WESTERN OREGON UNIVERSITY

Neng Yang (CCSA Campus Rep.)
Assistant Vice President, Office of Int'l Education & Development
Maaske Hall
345 N. Monmouth Avenue
Monmouth, Oregon 97361
Phone: (503) 838-8425 FAX: (503) 838-8338
email: studyabroad@wou.edu



SHORT-TERM ACADEMIC PROGRAMS IN ENGLISH-SPEAKING COUNTRIES



BELIZE



IRELAND



LONDON



VISIT US AT

