

PEER MENTOR – PROGRAM LEADER APPROVAL NEEDED

Risk Management & Insurance in London

Home to one of the three most important insurance and reinsurance markets in the world, London offers students a host of unique learning opportunities. Visit the well-known Lloyd's and some of the brokers, insurers and reinsurers doing business there. Also visit Parliament, and Westminster Abbey, attend a play in London's famed West End, and tour the city. We build in explore time for you to spend two days traveling on your own.



PROGRAM LEADER

Lisa Gardner
Accounting, Finance and Information Systems
lisa.gardner@eku.edu
859-622-1120



Debbie Ellis
Accounting, Finance and Information Systems
859-622-1579
Debbie.Ellis@eku.edu



PROGRAM DETAILS

Location: London
Term: Summer 2020
On-site: May 12-24 (13 Days/11 nights with two travel days)

COURSE

- EKU students will be registered in UNP 300: London: International Insurance and Reinsurance.
- Attendance in class meetings is required. At each meeting we will go over what to expect and what is required for travel. You will also be given assignments and their due dates.

ACCOMMODATIONS

Twin occupancy rooms with ensuite bathroom. See details below.

ITINERARY **See Attached.**

ELIGIBILITY

- Current EKU student eligible to enroll in EKU courses,
- Good academic standing as defined in the Undergraduate Catalog or Graduate Catalog,
- A minimum of 18 years of age at time of departure,
- No current disciplinary sanctions as verified by the EKU (or home campus) Office of Student Conduct (or equivalent). Students who become ineligible to attend the program after applying due to disciplinary sanctions will be subject to standard program cost penalty rates. Students are responsible for notifying the CCSA when they become aware of this ineligibility. For eligibility questions pertaining to disciplinary sanctions, students should contact the home campus Office of Student Conduct.
- Students must complete home campus study abroad application prior to being registered in this course,
- Student must possess passport book valid for a least six (6) months after return date,
- Students must complete pre-departure orientations,
- Full payment prior to departure, and
- Permission of instructor(s) is required.

Limited to the first 4 applicants and must be pre-approved by Lisa Gardner.

PROGRAM COST

Base Package – Peer Mentors: \$ 750

APPLY NOW

All payment made to CCSA at via this application link.

May also link with ccsa.cc/summer/ekulondon

BASE PACKAGE (included)	EXCLUDED FROM BASE PACKAGE
<ul style="list-style-type: none"> • RT international airfare from Lexington for group • Lodging - (double occupancy/ensuite) • Meal Allowance (GBP15/day) • Adult Travelcard zones 1-4 2X7-day • International medical insurance with travel delay • Shard tickets • St. Paul's Cathedral • London Theater performance • English Tea • Parliament Tour • Westminster Tour • Welcome Meal • Hop on/Hop Off Tour 	<ul style="list-style-type: none"> • Tuition/fees for 3 credit determined by your home campus • Items not explicitly listed in package. • Transportation within the United States. • Airport-to-hotel transfer for those not arriving with the arranged flight itinerary. • Airport taxes or fees. • Meals, services, and beverages not included during course-related field programs. • Personal expenses such as laundry, phone service, and Internet access. • Baggage fees and any costs associated with flight changes. • Portage Services. • Services and entrances other than stated in itinerary. • Visas and/or Passports.
Final program fee subject to change due to travel arrangements.	

ACCOMMODATION DETAILS

Twin bedrooms with two single beds. All apartments are or have:

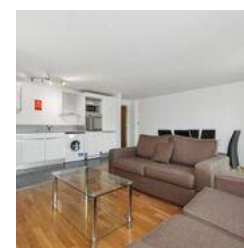
- self-contained;
- a secure front door and window locks;
- fully furnished with good quality furnishings, fittings and decorations;
- independently heated (London accommodations rarely have air conditioning);
- 1 bathroom to 4 persons (on average);
- a fully equipped kitchen including a microwave oven and washing machine;
- Storage;
- Wi-Fi internet access.

Included in the cost of accommodation are the following services:

- arrival orientation at the housing to include fire instructions, health and safety rules, use of appliances, and reporting of maintenance issues;
- all utilities including: gas, electricity, council tax, water rates, sewer charges, wireless internet and any other utility or service.

Lodging location will be finalized by May 1, 2020.

Pictures are examples of locations and may not be the actual location.



TERMS & CONDITIONS

- The selection process for this program requires a specific application provided by program leader.
- Independent travel (*before and/or after the programs start and end date*) is permitted.
- Code of Conduct: All participants will be held you home campus Code of Conduct.
- All participants must complete BOTH the CCSA application and an ECU application to be eligible.
- The selection process for this program requires a specific application provided by program leader.
- Independent travel (*before and/or after the programs start and end date*) is permitted.
- Code of Conduct: All participants will be held you home campus Code of Conduct.
- All participants must complete BOTH the CCSA application and an ECU application to be eligible.
- **Passport.** Each participant must have a passport that includes an expiration date, which is 6 months beyond the last date of the program.
- **Physical Expectations.** Participants should be in good physical condition and be prepared to walk 4-5 miles a day.
- **STEP** (Smart Traveler Enrollment Program). Participants must show proof of registration by May 1, 2020. <https://step.state.gov/STEP/Index.aspx>

Payment Schedule:	
February 1, 2020 – Application with \$250 non-refundable deposit.	\$250
March 15, 2020 – 50% program fee due. Students applying after this date pay the 50% of program fee to be considered for the program.	\$250
May 1, 2020 – Balance due for program.	\$0
May 1, 2020 – Balance due for optional activities.	TBD

PAYMENT PAGE

Penalty for Withdrawal or Non-payment:	
After March 15	50% of program cost plus any non-recoverable costs.*
After May 1	100% of program cost (No refund) plus any non-recoverable costs.*
<p>* Non-recoverable costs include, but are not limited to, the following:</p> <ul style="list-style-type: none"> • Airfare (non-refundable after ticket issued) • Single room supplement • Optional excursion fees • Additional class activity fees 	<p>If a balance remains after the payment due date, the participant may be dropped from the program. A student may remain in the program by providing an award notification from your home campus Student Financial Assistance that verifies ability to pay the program fee immediately after aid is received.</p> <p>If a student completes a program without full payment prior to the departure, the student will receive an incomplete until the obligation is paid. CCSA will inform faculty leaders if a student is in this situation prior to the term grade deadline.</p>

PENALTIES FOR CHANGES - After the first payment deadline, changes requested by participating individuals may incur fees. These may include, but are not limited to, the following:

Flight Changes	Airline fee + \$200
Housing Changes	Lodging direct costs + \$200
Optional Excursion Changes	\$200
Credit Option Changes	\$50

Early Arrival/Late Departure

Lodging direct costs + \$100

LOGISTICAL CONSIDERATIONS

- **FAFSA.** In order to qualify for financial aid, student should apply for FAFSA at time of application.
- **Staying safe in London:** Call 999 or 112 in an emergency to contact the police, ambulance or fire department. [Link for more information.](#)
- **US Embassies Abroad.** Before you travel, always find out where the closest US embassy or consulate will be to your travel destination. <https://www.usembassy.gov/united-kingdom/>
 - Embassy of the United States of America, 33 Nine Elms Lane, London, SW11 7US
- **Money Matters:** If you have a credit/debit card or ATM card, inform your bank of travel dates to London as May 12-24, 2020. Recommend that you budget for at least £300 for personal expenses. Options to obtain British Pounds will be discussed in class sessions.

CCSA – The Cooperative Center for Study Abroad and its associates are not responsible for any loss due to theft, personal injury, flight or weather delays, negligence, or default of suppliers, or suppliers changing of itineraries. They and their associates are not responsible for any loss due to travel/flight delays or changes in travel plans due to Acts of Nature or other unforeseen circumstances, nor are we responsible for accidents and medical care. Tour services are furnished by independent contractors who are not agents or servants of CCSA. Refunds are not available for unused portions of the package.

Subject to change with notice to participants due to adjustment in program or pricing.

INDEPENDENT ACTIVITIES

A variety of independent activities are identified below. These activities are not included in program, although time is allocated to you do these yourself. This is informational-only and CCSA does not endorse any particular service provider. See itinerary for explore time during which you may arranged your independent activities.

- Sky Garden <https://skygarden.london/>
- Canterbury and Dover <https://www.londontoolkit.com/whattodo/canterbury.htm>
- Brighton <https://www.visitbrighton.com/>
- Greenwich (Thames River) [Link](#)

Information about Optional Excursions will be available soon.

ITINERARY **All dates and locations are subject to change.**

Tuesday, May 12, 2020 Travel Day

Depart US Airport included

Group Flight
American Airlines
Lexington to Charlotte 2:25pm to 3:49pm
Charlotte to London 7:05pm to 8:00am (arrive May 13)

Wednesday, May 13, 2020 Orientation Day

Arrive LHR
Clear customs & immigration

Ground transport to lodging

Check in Lodging

Meal

Orientation

Hop On/Off Tour

Time for personal items

Distribute Travel Cards, ETC

Afternoon

Food, money, etc.

Thursday, May 14, 2020 Class Day

Class meet 9-10 AM

Morning Appointments

Afternoon Appointments

Shard Tour

Explore Time

Class reflection (evening)

Friday, May 15, 2020 Class Day

Class meet 9-10 AM

Morning Appointments

Explore Time

Paris Weekend (tentative and optional)

Saturday, May 16, 2020 Explore Day

Paris Weekend (tentative and optional)

Stonehenge & Salisbury (tentative and optional)

Independent Activities

Sunday, May 17, 2020 Explore Day

Paris Weekend (tentative and optional)

Oxford (on your own – guidance and information available by request)

Monday, May 18, 2020 Class Day

Class meet 9-10 AM

Morning Appointments

Afternoon Appointments

Explore Time

Class reflection (evening)

Tuesday, May 19, 2020 Class Day

Class meet 9-10 AM

Morning Appointments

Afternoon Appointments

Afternoon Tea

Explore Time

Wednesday, May 20, 2020 Class Day

Class meet 9-10 AM

Morning Appointments

Afternoon Appointments

Westminster Abbey Tour

Parliament Tour

Class reflection (evening)

Thursday, May 21, 2020 Class Day

Class meet 9-10 AM

Morning Appointments
Afternoon Appointments
Theatre (Matinee)
Class reflection (evening)

Friday, May 22, 2020 Class Day

Class meet 9-10 AM
Morning Appointments
Harry Potter World (on your own – guidance and information available by request)
Explore Time
Class reflection (evening)

Saturday, May 23, 2020 Explore Day

Greater London area	Independent Activities
Final On-site meeting (evening)	passport and packing check in

Sunday, May 24, 2020 Travel Day

Ground Transport to LHR
Flight Depart LHR for US

American
London to Charlotte 10:30am to 2:55pm
Charlotte to Lexington 4:10pm to 5:24pm

All dates and locations are subject to change.
